

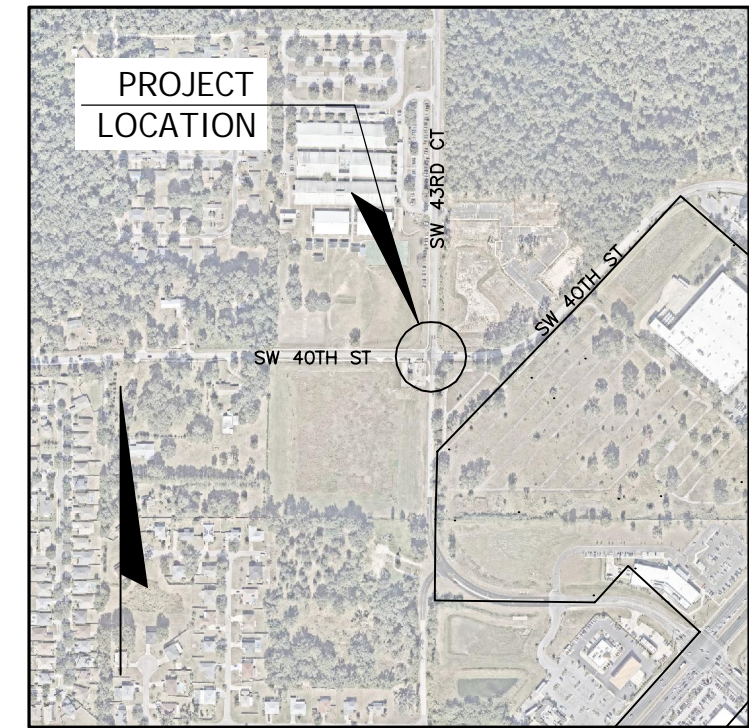
CITY OF OCALA
 OFFICE OF THE CITY ENGINEER
**SW 43RD CT AT SW 40TH ST
 SIGNALIZATION PLANS
 (STRAIN POLE)
 BID PLANS**

CONTRACT NO. CIP/250428

INDEX OF PLANS	
SHEET NUMBER	SHEET DESCRIPTION
T-01	KEY SHEET
T-02	SIGNATURE SHEET
T-03	GENERAL NOTES & QUANTITIES
T-04	GENERAL NOTES & QUANTITIES
T-05	SIGNING AND MARKING PLAN
T-06	SIGNALIZATION PLAN
T-07	SIGNALIZATION PLAN
T-08	SCHOOL FLASHER PLAN
T-09	SCHOOL FLASHER PLAN
T-10	SPAN TABULATION
T-11	STRAIN POLE ASSEMBLIES DATA TABLE
T-12	GUIDESIGN WORKSHEET
T-13	PROJECT SIGN DETAIL

SW 43RD CT N POSTED/DESIGN SPEED = 40 MPH
 SW 43RD CT S POSTED/DESIGN SPEED = 30 MPH
 SW 40TH ST E POSTED/DESIGN SPEED = 30 MPH
 SW 40TH ST W POSTED/DESIGN SPEED = 45 MPH

LENGTH OF PROJECT		
	LINEAR FEET	MILES
ROADWAY	131.5	0.025
BRIDGES	N/A	N/A
NET LENGTH OF PROJECT	N/A	N/A
EXCEPTIONS	N/A	N/A
GROSS LENGTH OF PROJECT	N/A	N/A



PROJECT LOCATION MAP

(NOT TO SCALE)
 SECTIONS: 34; TOWNSHIP: 15 SOUTH; RANGE: 21 EAST
 MARION COUNTY, FLORIDA

UTILITY COMPANIES		
UTILITY COMPANY	CONTACT PERSON	PHONE NUMBER
COX CABLE	BRYAN WILLIAMS	(352) 966-8107
LUMEN LOCAL	JOHN PLAMONDON	(352) 425-4444
SPECTRUM	KENNY KROLL	(352) 553-0094
TECO PEOPLES GAS	LANDON MEAHL	(407) 408-5566
CITY OF OCALA ELECTRIC	STEVE SHORT	(352) 374-3274
CITY OF OCALA WATER & SEWER	STACEY FERRANTE	(352) 351-6775
CITY OF OCALA FIBER	OSHA NE PARKER	(352) 401-6950
CITY OF OCALA TRAFFIC	NICK BLIZZARD	(352) 351-6733

CITY OFFICIALS

MAYOR - BEN MARCIANO
 DISTRICT 1 - COUNCIL PRESIDENT BARRY MANSFIELD
 DISTRICT 2 - COUNCIL MEMBER IRE BETHEA, SR.
 DISTRICT 3 - COUNCIL MEMBER JAY MUSLEH
 DISTRICT 4 - COUNCIL PRESIDENT PRO-TEM KRISTEN DREYER
 DISTRICT 5 - COUNCIL MEMBER JAMES HILTY, SR.
 CITY ENGR./ENGINEERING DIRECTOR - SEAN LANIER, P.E., CFM

CONSTRUCTION REFERENCES

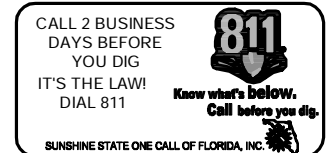
BID SPECIFICATIONS AND CONTRACT
 CITY OF OCALA LAND DEVELOPMENT CODE, LATEST EDITION
 CITY OF OCALA STANDARD SPECIFICATIONS FOR CONSTRUCTION OF STREETS,
 STORMWATER, TRAFFIC, WATER AND SEWER INFRASTRUCTURE, JANUARY 2024
 FDOT STANDARD PLANS FOR ROAD AND BRIDGE CONSTRUCTION, FY 2024-25
 FDOT STANDARD SPECIFICATIONS FOR ROAD & BRIDGE CONSTRUCTION, FY 2024-25
 MANUAL OF UNIFORM MINIMUM STANDARDS FOR DESIGN, CONSTRUCTION AND
 MAINTENANCE FOR STREETS AND HIGHWAYS (FLORIDA GREENBOOK), FDOT, 2018
 MANUAL ON UNIFORM TRAFFIC CONTROL DEVICES FOR STREETS AND HIGHWAYS, 2009
 EDITION, INCLUDING REVISIONS 1 AND 2 USDOT, FHWA

ENGINEER'S CERTIFICATION

I HEREBY CERTIFY THAT THE WORK PROPOSED BY THESE PLANS
 COMPLY WITH THE APPLICABLE STANDARDS AND SPECIFICATIONS AS
 REQUIRED BY THE LAND DEVELOPMENT CODE OF MARION COUNTY,
 FLORIDA, AND FDOT STANDARD PLANS EXCEPT AS NOTED OR SHOWN.

AMBER L. GARTNER, P.E.
 KIMLEY-HORN AND ASSOCIATES, INC. (REGISTRY 35106)
 1700 SE 17TH STREET, SUITE 200
 OCALA, FLORIDA 34471
 FLORIDA P.E. NO. 72294

SIGNATURE _____

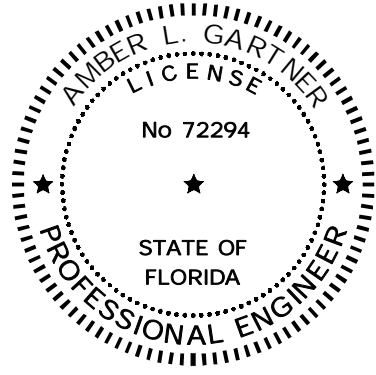


CITY OF OCALA OCALA, FLORIDA		OFFICE OF THE CITY ENGINEER 1805 NE 30TH AVE, BLDG 600 OCALA, FL 34470	
NAME	DATE	DESCRIPTION	DATE
DRAWN BY		REVIEWED BY	
KHA		KHA	
SUPERVISED BY: A. L. GARTNER, P.E.		BID PLANS	
© 2025 AMBER L. GARTNER, P.E., INC. 1700 SE 17TH STREET, SUITE 200, OCALA, FL 34471 P.E. LICENSE NO. 72294			
SW 43RD CT AT SW 40TH ST SIGNAL STRAIN POLE PLANS KEY SHEET			
SHEET T-01			

Drawing name: K:\OCA_Civil\142371063-SW 43 CT at SW 40 ST Signal Strain Pole\CAD\PlanSheets\1 TITLE SHEET.dwg T-01 KEY SHEET Feb 17, 2025 8:03am by: gobe.gilligan
 This document, together with the concepts and designs presented herein, is intended only for the specific purpose and client for which it was prepared. Reuse of and improper reliance on this document without written authorization and adaptation by Kimley-Horn and Associates, Inc. shall be without liability to Kimley-Horn and Associates, Inc.

THE OFFICIAL RECORD OF THIS SHEET IS THE ELECTRONIC FILE DIGITALLY SIGNED AND SEALED UNDER RULE 61G15-23.004, F.A.C.

Drawing name: K:\OCA_Civil\142371063-SW 43 CT at SW 40 ST Signal Strain Pole\CAD\PlanSheets\2 SIGNATURE SHEET.dwg T-02 SIGNATURE SHEET Feb 13, 2025 3:56pm by: gabe.gilligan
 This document, together with the concepts and designs presented herein, is intended only for the specific purpose and client for which it was prepared. Reuse of and improper reliance on this document without written authorization and adaptation by Kimley-Horn and Associates, Inc. shall be without liability to Kimley-Horn and Associates, Inc.



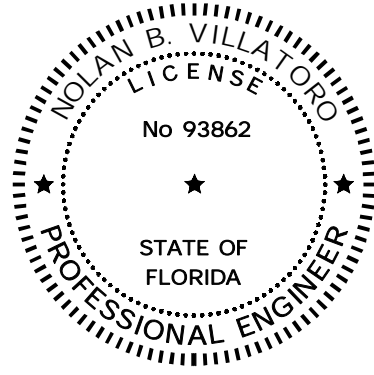
THIS ITEM HAS BEEN DIGITALLY SIGNED AND SEALED BY:

ON THE DATE ADJACENT TO THE SEAL. PRINTED COPIES OF THIS DOCUMENT ARE NOT CONSIDERED SIGNED AND SEALED AND THE SIGNATURE MUST BE VERIFIED ON THE ELECTRONIC COPIES.

KIMLEY-HORN AND ASSOCIATES, INC.
 1700 SE 17TH STREET, SUITE 200
 OCALA, FL 34471
 REGISTRY 35106
 AMBER L. GARTNER, P.E. NO. 72294

THE ABOVE NAMED PROFESSIONAL ENGINEER WILL BE RESPONSIBLE FOR THE FOLLOWING SHEETS IN ACCORDANCE WITH RULE 61G15-23.004, F.A.C.

SHEET NO.	SHEET DESCRIPTION
T-01	KEY SHEET
T-02	SIGNATURE SHEET
T-03, T-04	GENERAL NOTES & QUANTITIES
T-05	SIGNING AND MARKING PLAN
T-06, T-07	SIGNALIZATION PLAN
T-08, T-09	SCHOOL FLASHER PLAN
T-10	SPAN TABULATION
T-12	GUIDESIGN WORKSHEET
T-13	PROJECT SIGN DETAIL



THIS ITEM HAS BEEN DIGITALLY SIGNED AND SEALED BY:

ON THE DATE ADJACENT TO THE SEAL. PRINTED COPIES OF THIS DOCUMENT ARE NOT CONSIDERED SIGNED AND SEALED AND THE SIGNATURE MUST BE VERIFIED ON THE ELECTRONIC COPIES.

KIMLEY-HORN AND ASSOCIATES, INC.
 189 SOUTH ORANGE AVENUE, SUITE 1000,
 ORLANDO, FL 32801
 REGISTRY 35106
 NOLAN B. VILLATORO, P.E. NO. 93862

THE ABOVE NAMED PROFESSIONAL ENGINEER WILL BE RESPONSIBLE FOR THE FOLLOWING SHEETS IN ACCORDANCE WITH RULE 61G15-23.004, F.A.C.

SHEET NO.	SHEET DESCRIPTION
T-02	SIGNATURE SHEET
T-11	STRAIN POLE ASSEMBLIES DATA TABLE

SHEET
T-02

SW 43RD CT AT SW 40TH ST
SIGNAL PLANS
SIGNATURE SHEET

Kimley»Horn
 © 2025 KIMLEY-HORN AND ASSOCIATES, INC.
 AMBER L. GARTNER, P.E.
 P.E. LICENSE NO. 72294
 1700 SE 17TH STREET, SUITE 200, OCALA, FL 34471

OCALA
 Find your place
 CITY OF OCALA
 OCALA, FLORIDA
 OFFICE OF THE CITY ENGINEER
 1805 NE 30TH AVE, BLDG 600
 OCALA, FL 34470

DRAWN BY	NAME	DATE
REVIEWED BY	KHA	
SUPERVISED BY	KHA	
	SUPERVISED BY: A. L. GARTNER, P.E.	

REVISIONS	DESCRIPTION	DATE
	BID PLANS	

DESCRIPTION



THE OFFICIAL RECORD OF THIS SHEET IS THE ELECTRONIC FILE DIGITALLY SIGNED AND SEALED UNDER RULE 61G15-23.004, F.A.C.

Drawing name: K:\OCA_Civil\142371063-SW 43 CT at SW 40 ST Signal Strain Pole\CAD\PlanSheets\3 GENERAL NOTES AND QUANTITIES.dwg T-03 GENERAL NOTES & QUANTITIES Feb 13, 2025 3:56pm by: gobe-gilligan
 This document, together with the concepts and designs presented herein, is intended only for the specific purpose and client for which it was prepared. Reuse of and improper reliance on this document without written authorization and adaptation by Kimley-Horn and Associates, Inc. shall be without liability to Kimley-Horn and Associates, Inc.

GENERAL NOTES

1. THE MAINTAINING AGENCY IS CITY OF OCALA.
2. THESE PLANS HAVE BEEN PREPARED IN ACCORDANCE WITH THE CITY OF OCALA STANDARD SPECIFICATIONS FOR CONSTRUCTION OF STREETS, STORMWATER, TRAFFIC, WATER, AND SEWER INFRASTRUCTURE (JANUARY 2024), THE 2009 MANUAL ON UNIFORM TRAFFIC CONTROL DEVICES (MUTCD); THE FLORIDA DEPARTMENT OF TRANSPORTATION STANDARD SPECIFICATIONS FOR ROAD AND BRIDGE CONSTRUCTION (FY 2024-25) AND THE FLORIDA DEPARTMENT OF TRANSPORTATION STANDARD PLANS FOR ROAD CONSTRUCTION (FY 2024-25), AND ALL SUPPLEMENTS APPLICABLE THERETO.
3. ALL WORK SHALL CONFORM TO SECTION 34 41 13 TRAFFIC SIGNALS, OF THE CITY OF OCALA STANDARD SPECIFICATIONS FOR CONSTRUCTION OF STREETS, STORMWATER, TRAFFIC, WATER, AND SEWER INFRASTRUCTURE.
4. THESE PLANS REFLECT CONDITIONS KNOWN AT THE TIME OF PLAN DEVELOPMENT. IN THE EVENT THAT ACTUAL FIELD CONDITIONS PREVENT THE APPLICATION OF THESE PLANS AND/OR THE SPECIFICATIONS OR THE PROGRESSION OF THE WORK SPECIFIED IN THE PLANS, THE CONTRACTOR SHALL NOTIFY THE ENGINEER AND CITY OF OCALA ENGINEER'S OFFICE IMMEDIATELY AND PRIOR TO ANY FURTHER EXECUTION OF THE WORK.
5. THE CONTRACTOR SHALL BE RESPONSIBLE FOR ALL UTILITY LOCATION COORDINATION EFFORTS AS REQUIRED BY OSHA AND FLORIDA STATUTE REGARDING PROTECTION OF EXISTING UTILITIES. THE CONTRACTOR IS REMINDED THAT NOT ALL UTILITY PROVIDERS ARE SUBSCRIBERS TO THE SUNSHINE STATE ONE-CALL SYSTEM, AND IT SHALL BE INCUMBENT UPON THE CONTRACTOR TO MAKE EVERY EFFORT TO ENSURE THAT ALL UTILITIES ARE LOCATED PRIOR TO CONSTRUCTION.
6. THE CONTRACTOR SHALL NOTIFY THE APPROPRIATE UTILITY DEPARTMENT AT LEAST TWO (2) BUSINESS DAYS IN ADVANCE OF POLE SETTING AND OPERATIONS WHERE CONFLICT WITH OVERHEAD ELECTRICAL UTILITIES IS EXPECTED, WITH TRENCHING OPERATIONS, OR ANYWHERE UTILITY CONFLICTS MAY BE ENCOUNTERED.
7. IN THE EVENT OF CONFLICT WITH THE CROSSING OF EXISTING UNDERGROUND UTILITIES, THE CONTRACTOR SHALL ADJUST THE DEPTH OF PROPOSED CONDUIT AS INSTRUCTED BY THE ENGINEER IN CHARGE TO PROVIDE VERTICAL SEPARATION PER PREVAILING STANDARDS.
8. THE CONTRACTOR SHALL HAND DIG THE FIRST 4' AT EACH POLE LOCATION AND THE FIRST 2' AT EACH PEDESTAL LOCATION.
9. THE CONTRACTOR SHALL NOTIFY CITY OF OCALA AT LEAST SEVEN (7) BUSINESS DAYS PRIOR TO BEGINNING CONSTRUCTION.
10. CONTRACTOR SHALL APPLY FOR A RIGHT-OF-WAY UTILIZATION PERMIT, AT LEAST 5 BUSINESS DAYS PRIOR TO STARTING WORK DATE, FOR ANY WORK BEING DONE WITHIN THE CITY'S RIGHT-OF-WAY.
11. IN THE EVENT THAT TRAFFIC SIGNAL CONSTRUCTION ACTIVITY AT THE INTERSECTION REQUIRES CLOSURE OF A LANE OR LANES, THE CONTRACTOR SHALL PROCURE THE SERVICES OF TRAFFIC CONTROL OFFICER TO DIRECT TRAFFIC FOR THE DURATION OF THE CLOSURE(S). PAYMENT FOR THE OFFICER SHALL BE INCIDENTAL TO THE WORK AND WILL NOT BE PAID SEPARATELY.
12. ALL MAINTENANCE OF TRAFFIC FOR THIS INSTALLATION SHALL CONFORM TO THE FDOT STANDARD INDEX(ES) 102-600 THROUGH 102-680 THAT ARE MOST APPLICABLE TO THE INTENT OF THE CONSTRUCTION ACTIVITY IN PROGRESS. THE CONTRACTOR SHALL BE RESPONSIBLE FOR MAINTENANCE OF TRAFFIC FOR THE DURATION OF THIS PROJECT.
13. VARIABLE MESSAGE SIGNS SHALL BE INSTALLED ON SW 43RD COURT AND SW 40TH STREET 500 FEET IN ADVANCE OF THE TRAFFIC SIGNAL. THE SIGNS SHALL BE ACTIVATED ON THE DAY THE SIGNAL IS TURNED ON AND WILL OPERATE FOR 14 DAYS. THE MESSAGE SHALL BE "NEW SIGNAL AHEAD" "BE PREPARED TO STOP".
14. AT THE TIME OF FINAL ACCEPTANCE OF THE PROJECT, THE TRAFFIC SIGNALS SHALL BE INSPECTED BY THE CITY OF OCALA TRAFFIC DIVISION. AT THAT TIME, THE CONTRACTOR SHALL PROVIDE A WARRANTY/MAINTENANCE BOND AND FURNISH ALL NECESSARY TEST EQUIPMENT, INCLUDING A BUCKET TRUCK, FOR THE TESTING AND INSPECTION OF TRAFFIC SIGNALS. A SIGNAL INSPECTION IS TO BE SCHEDULED WITH THE CITY OF OCALA PUBLIC WORKS (352) 351-6733, A MINIMUM OF 10 DAYS PRIOR TO THE SIGNAL BEING PLACED INTO OPERATION.
15. DURING NON-WORKING HOURS, THE CONTRACTOR SHALL NOT STORE ANY MATERIALS OR PARK ANY EQUIPMENT WITHIN 30 FEET OF THE EDGE OF THE TRAVELED WAY. IF THE ABOVE IS NOT POSSIBLE, THE CONTRACTOR SHALL APPOINT AN APPROVED STORAGE AREA AND SUCH AREA SHALL BE PROPERLY DELINEATED AND ADVANCE WARNING SHALL BE UTILIZED.
16. PER FDOT STANDARD SPECIFICATIONS, ALL FIELD WIRING SHALL BE CLEARLY IDENTIFIED WITH WEATHERPROOF TAGS THAT ARE SECURELY ATTACHED TO EACH CABLE. THE CONTRACTOR SHALL SUBMIT THE PROPOSED TAGGING SYSTEM WITH THE SUBMITTALS PACKAGE AS REQUIRED FOR PERMIT JOBS.
17. PRIOR TO FINAL ACCEPTANCE BY THE CITY, SUBMIT TO THE CITY TRAFFIC ENGINEER TWO (2) COMPLETE AND COMPREHENSIVE SETS OF AS-BUILT PLANS ON TWENTY-FOUR INCH BY THIRTY-SIX INCH (24"x36") PLAN SHEETS AND ONE ELECTRONIC FILE COPY ON READABLE CD. AS-BUILT DRAWINGS SHALL ACCURATELY REFLECT THE ACTUAL, AS-BUILT CABINET IN THE FIELD AND SHALL IDENTIFY THE FOLLOWING INFORMATION.
 - a. ABANDONED AND UNUSED PULL BOXES SHALL BE CLEARLY LABELED. DISTANCES FROM THE INTERSECTION OF EACH INSTALLED PULL BOX SHALL BE MEASURED FROM THE PERPENDICULAR EDGE OF CURB AND FROM THE EDGE OF THE NEAREST CURB TO INDICATE LOCATION IN RELATION TO THE ROADWAY.
 - b. THE INSTALLED CONDUIT'S SIZE AND NUMBER OF RUNS SHALL BE CLEARLY NOTED AS WELL AS THE DISTANCE AWAY FROM THE NEAREST CURB.
 - c. IF INSTALLED, THE LOCATION OF SIGNAL POLES, CONTROLLER CABINET, UNINTERRUPTIBLE POWER SUPPLY AND BATTERY BACKUP CABINET, COMMUNICATION CABLE, VIDEO DETECTION CAMERAS AND CABLE, ITS CAMERAS AND CABLE, OVERHEAD MOUNTED STREET NAME SIGNS, LIGHTED OR NON-LIGHTED AND CABLE RUNS, AND POWER CABLE SHALL BE SHOWN ON THE PLANS.
 - d. TWO (2) SETS OF SIGNAL WIRING COLOR CODE FORMS SHALL BE INCLUDED WITH THE AS-BUILT PLANS.
 - e. CONTRACTOR SHALL CORRECT ANY ERRORS TO THE AS-BUILT PLANS UPON REVIEW BY THE ENGINEER BEFORE FINAL ACCEPTANCE IS COMPLETE.
18. THE CONTRACTOR SHALL SUBMIT CERTIFICATES OF INSPECTION FROM THE MANUFACTURER THAT THE EQUIPMENT AND MATERIALS TO BE SUPPLIED HAVE BEEN INSPECTED AT THE PLANT AND MEET THE REQUIREMENTS OF THE CONTRACT DOCUMENTS. THESE CERTIFICATES SHALL BE SUBMITTED PRIOR TO BEGINNING WORK.

19. THE CABINET DOOR SHALL BE ORIENTED SO THAT THE DOOR OPENS AWAY FROM THE INTERSECTION.
20. THREE SPARE CONDUCTORS PER SIGNAL CABLE ARE REQUIRED. SPARES SHALL BE BOUND TOGETHER AND GROUNDED TO THE BUS GROUNDING FACILITY IN THE CONTROLLER CABINET.
21. ALL TRAFFIC SIGNAL HEAD ASSEMBLIES SHALL HAVE A MINIMUM LOW POINT OF CLEARANCE OF 17.5' AND A MAXIMUM HIGH POINT OF CLEARANCE OF 19' FROM THE BOTTOM OF THE ASSEMBLY TO THE ROADWAY.
22. THE CONTRACTOR SHALL VERIFY COLOR CODES WITH CITY OF OCALA FOR THE SIGNAL CABLE CONDUCTORS PRIOR TO ORDERING.
23. CIRCULAR DRIP LOOPS (MINIMUM ONE CIRCLE) ARE TO BE PROVIDED AT ALL AERIAL DISCONNECT HANGERS, INTERCONNECT JUNCTION BOX, ELECTRICAL SIGN, AND POLE LOCATIONS.
24. CABLE GRIP SHALL BE OF SUFFICIENT SIZE TO NOT COMPROMISE THE INSULATION ON THE SIGNAL CABLE.
25. ALL CABLE SHALL BE PULLED IN THE CONDUIT WITH A CABLE GRIP DESIGNED TO PROVIDE A FIRM HOLD ON THE EXTERIOR COVERING OF THE CABLE. A WINCH WITH A SLIP CLUTCH SHALL BE USED TO ENSURE THAT THE ALLOWABLE TENSION IS NOT EXCEEDED. AN APPROVED LUBRICANT SHALL BE USED TO FACILITATE THE PULLING OF THE CABLE.

DRAWN BY	NAME	DATE	REVISIONS	DATE	DESCRIPTION	DATE	DESCRIPTION
REVIEWED BY	KHA				BID PLANS		
SUPERVISED BY: A. L. GARTNER, P.E.							
 CITY OF OCALA OCALA, FLORIDA OFFICE OF THE CITY ENGINEER 1805 NE 30TH AVE, BLDG 600 OCALA, FL 34470							
 Kimley-Horn CONSULTING ENGINEERS, INC. 1100 W. 17TH STREET, SUITE 200, OCALA, FL 34470 P.E. LICENSE NO. 72294 P.E. LICENSE NO. 34471							
SW 43RD CT AT SW 40TH ST SIGNAL STRAIN POLE PLANS GENERAL NOTES & QUANTITIES							
SHEET T-03							

CALL 2 BUSINESS DAYS BEFORE YOU DIG

811

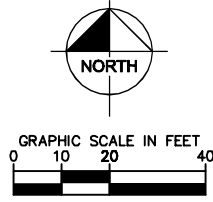
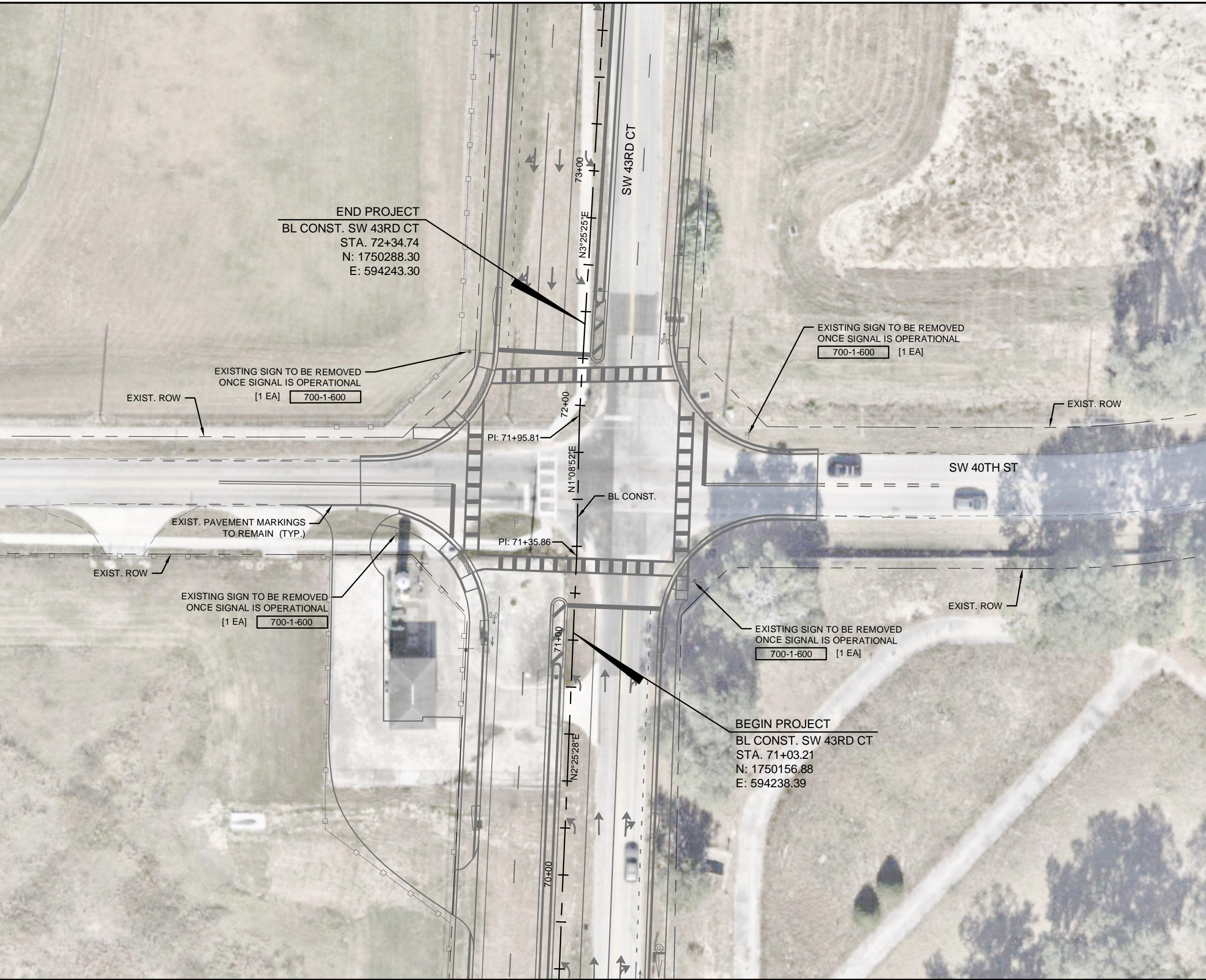
IT'S THE LAW! Dial 811


Know what's below. Call before you dig.

SUNSHINE STATE ONE CALL OF FLORIDA, INC.

THE OFFICIAL RECORD OF THIS SHEET IS THE ELECTRONIC FILE DIGITALLY SIGNED AND SEALED UNDER RULE 61G15-23.004, F.A.C.

Drawing name: K:\OCA_Civil\142371063-SW 43 CT at SW 40 ST Signal Strain Pole\CAD\PlanSheets\3A SIGNING AND MARKING PLAN.dwg T-05 SIGNING AND MARKING PLAN Feb 13, 2025 3:56pm by: gabe.gilligan
 This document, together with the concepts and designs presented herein, is intended only for the specific purpose and client for which it was prepared. Reuse of and improper reliance on this document without written authorization and adaptation by Kimley-Horn and Associates, Inc. shall be without liability to Kimley-Horn and Associates, Inc.



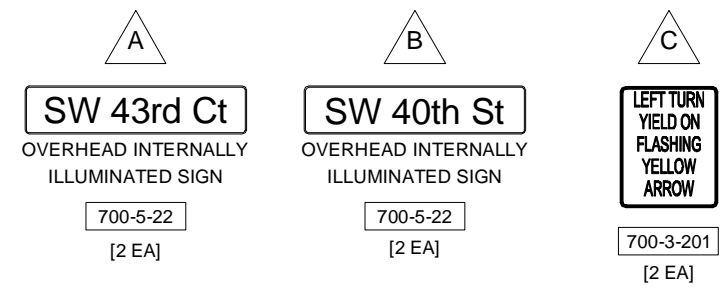
CALL 2 BUSINESS DAYS BEFORE YOU DIG
 IT'S THE LAW! DIAL 811

 Know what's below. Call before you dig.
 SUNSHINE STATE ONE CALL OF FLORIDA, INC.

CITY OF OCALA OCALA, FLORIDA OFFICE OF THE CITY ENGINEER 1805 NE 30TH AVE, BLDG 600 OCALA, FL 34470		NAME	DATE	REVISIONS	DESCRIPTION
DRAWN BY	KHA	DATE			
REVIEWED BY	KHA	DATE			
SUPERVISED BY: A. L. GARTNER, P.E.					BID PLANS
SW 43RD CT AT SW 40TH ST SIGNAL PLANS SIGNING AND MARKING PLAN					
SHEET T-05					

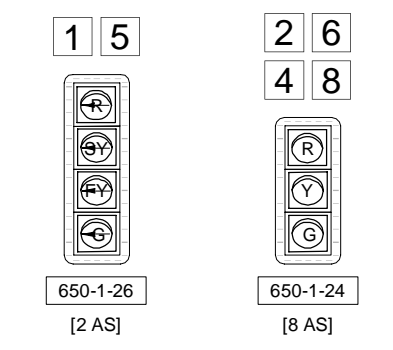
THE OFFICIAL RECORD OF THIS SHEET IS THE ELECTRONIC FILE DIGITALLY SIGNED AND SEALED UNDER RULE 61G15-23.004, F.A.C.

Drawing name: K:\OCA_Civil\142371063-SW 43 CT at SW 40 ST Signal Strain Pole\CAD\PlanSheets\4 SIGNAL PLAN.dwg T-06 SIGNALIZATION PLAN Feb 13, 2025 3:57pm by: gabe.gilligan
 This document, together with the concepts and designs presented herein, is intended only for the specific purpose and client for which it was prepared. Reuse of and improper reliance on this document without written authorization and adaptation by Kimley-Horn and Associates, Inc. shall be without liability to Kimley-Horn and Associates, Inc.

SIGN DETAILS

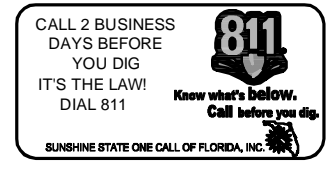


SIGNAL HEAD DETAILS



LEGEND:

- L-XX - LOOP DETECTOR ID
- LOOP ASSEMBLY TYPE B
- LOOP ASSEMBLY TYPE F
- TRAFFIC CONTROLLER CABINET
- TYPE P-II SERVICE POLE
- SIGN
- STRAIN POLE
- VEHICULAR TRAFFIC SIGNAL
- PEDESTRIAN SIGNAL/DETECTOR
- PULL & SPLICE BOX
- CONDUIT DIRECTIONAL BORE
- CONDUIT OPEN TRENCH



PROPOSED LOOPS
 [190 LF] 630-2-11
 [2 EA] 635-2-11
 [2 AS] 660-2-102
 [1 AS] 660-2-106

2 SIGNAL, LOOP, SPARE
 (4 RUNS) [105 LF] 630-2-12

PROP. PED. PEDESTAL
 STA: 72+06.63, 48.10' LT
 (2 RUNS) HV, LV [5 LF] 630-2-11
 [1 EA] 646-1-11
 [1 AS] 653-1-12
 [2 EA] 665-1-11

PROP. STRAIN POLE 1
 STA: 72+01.28, 53.61' LT
 (3 RUNS) HV, LV, LOOP [5 LF] 630-2-11
 4 INSULATORS @ 6' EACH [24 LF] 634-5-1
 LOOP [1 EA] 635-2-11
 SIGNAL, FIBER [2 EA] 635-2-12
 [1 EA] 641-2-30
 [1 EA] 682-1-113

EXIST. ROW
 SW 40TH ST
 45 MPH

PROP. STRAIN POLE 4
 STA: 71+28.39, 59.04' LT
 (3 RUNS) HV, LV, LOOP [5 LF] 630-2-11
 2 INSULATORS @ 6' EACH [12 LF] 634-5-1
 LOOP [1 EA] 635-2-11
 SIGNAL, FIBER [2 EA] 635-2-12
 [1 EA] 641-2-30
 [1 AS] 660-2-106

PROP. PED. PEDESTAL
 STA: 71+25.08, 51.45' LT
 (2 RUNS) HV, LV [5 LF] 630-2-11
 [1 EA] 646-1-11
 [1 AS] 653-1-12
 [2 EA] 665-1-11

SW 43RD CT
 30 MPH
 VIEW C ±100'
 (SHEET T-08)

VIEW A ±125'
 (SHEET T-08)
 VIEW B ±1250'
 (SHEET T-08)

PROP. PED. PEDESTAL
 STA: 72+16.73, 46.74' RT
 630-2-11 [10 LF] HV, LV (2 RUNS)
 635-2-11 [2 EA] HV, LV
 646-1-11 [1 EA]
 653-1-12 [1 AS]
 665-1-11 [2 EA]

(3 RUNS) HV, LV, LOOP [5 LF] 630-2-11 635-2-12 [2 EA] SIGNAL, FIBER
 2 INSULATORS @ 6' EACH [12 LF] 634-5-1 641-2-30 [1 EA]
 ELECTRIC, LOOP [2 EA] 635-2-11 660-2-106 [1 AS]

PROP. STRAIN POLE 2
 STA: 72+06.64, 59.80' RT

635-2-11 [1 EA]
 639-2-1 [125 LF; INCLUDES 50 LF SLACK]
 PROP. ELECTRICAL CONNECTION POINT

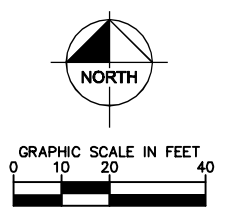
2 SIGNAL, LOOP, ELECTRIC, SPARE
 630-2-12 (5 RUNS) [65 LF]

PROP. STRAIN POLE 3
 INSTALL BT ON STRAIN POLE
 STA: 71+32.70, 57.94' RT
 630-2-11 [5 LF] HV, LV, VIDEO (3 RUNS)
 635-2-12 [2 EA] SIGNAL, FIBER
 641-2-30 [1 EA]
 660-6-122 [1 EA]

PROP. CABINET
 2 SIGNAL, LOOP, ELECTRIC, FIBER, 2 SPARE, (7 RUNS) [5 LF] 639-3-11 [1 EA]
 [1 PI] 630-2-11 641-2-12 [1 EA]
 [1 EA] 632-7-1 660-4-11 [1 EA]
 [1 EA] 633-3-11 660-6-121 [1 EA]
 [1 EA] 633-3-16 670-5-300 [1 AS]
 ELECTRIC, LOOP [2 EA] 635-2-11 684-1-1 [1 EA]
 SIGNAL, FIBER [2 EA] 635-2-12 685-1-13 [1 EA]
 [1 AS] 639-1-122 685-2-1 [1 EA]
 [55 LF; INCLUDES 50 LF SLACK] 639-2-1

PROP. PED. PEDESTAL
 STA: 71+32.87, 49.03' RT
 630-2-11 [5 LF] HV, LV (2 RUNS)
 646-1-11 [1 EA]
 653-1-12 [1 AS]
 665-1-11 [2 EA]

PROPOSED LOOPS
 [130 LF] 630-2-11
 [2 EA] 635-2-11
 [2 AS] 660-2-102
 [1 AS] 660-2-106



NOTES

- SW 43RD COURT IS THE MAJOR STREET, MOVEMENTS 1, 2, 5, AND 6, SW 40TH STREET IS THE MINOR STREET, MOVEMENTS 4 AND 8.
- CONTROLLER TIMINGS ARE INITIAL AND MAY REQUIRE FIELD ADJUSTMENT. YELLOW AND ALL RED SIGNAL TIMINGS SHALL COMPLY WITH FDOT REQUIREMENTS.
- FOUR-SECTION HEADS TO OPERATE WITH FLASHING YELLOW OPERATION DURING PERMISSIVE LEFT-TURN PHASES.
- FLASHING OPERATION SHALL BE YELLOW FOR MOVEMENTS 2 AND 6, RED FOR ALL OTHER MOVEMENTS.
- EXISTING STOP SIGN AND STREET NAME SIGN ASSEMBLIES ON SW 40TH STREET AND SW 43RD COURT SHALL BE REMOVED ONCE SIGNAL IS OPERATIONAL.
- SW 40TH STREET POSTED SPEED LIMIT IS 45 MPH WEST AND 30 MPH EAST, SW 43RD COURT IS 30 MPH SOUTH AND 40 MPH NORTH

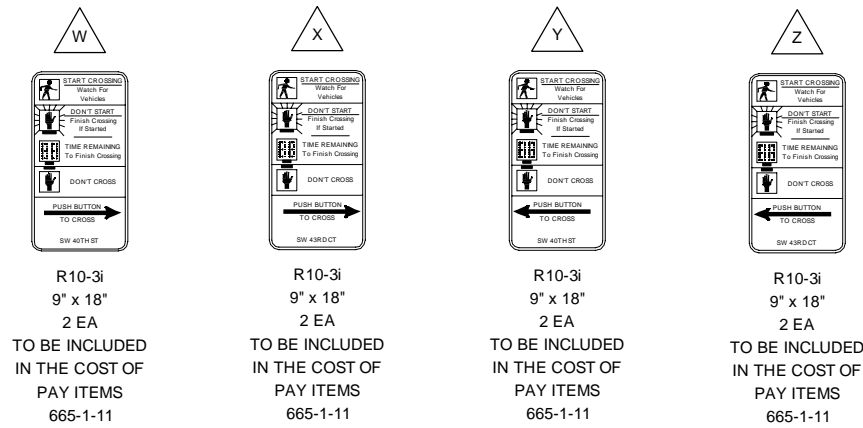
NAME	DATE	REVISIONS	DESCRIPTION	DATE
KHA			BID PLANS	
DRAWN BY				
REVIEWED BY				
SUPERVISED BY: A. L. GARTNER, P.E.				
CITY OF OCALA OFFICE OF THE CITY ENGINEER 1805 NE 30TH AVE, BLDG 600 OCALA, FL 34747				
© 2025 KIMLEY-HORN AND ASSOCIATES, INC. 1100 W. 17TH STREET, SUITE 200, OCALA, FL 34747 P.E. LICENSE NO. 22284				
SW 43RD CT AT SW 40TH ST SIGNAL PLANS SIGNALIZATION PLAN				
SHEET T-06				

THE OFFICIAL RECORD OF THIS SHEET IS THE ELECTRONIC FILE DIGITALLY SIGNED AND SEALED UNDER RULE 61G15-23.004, F.A.C.

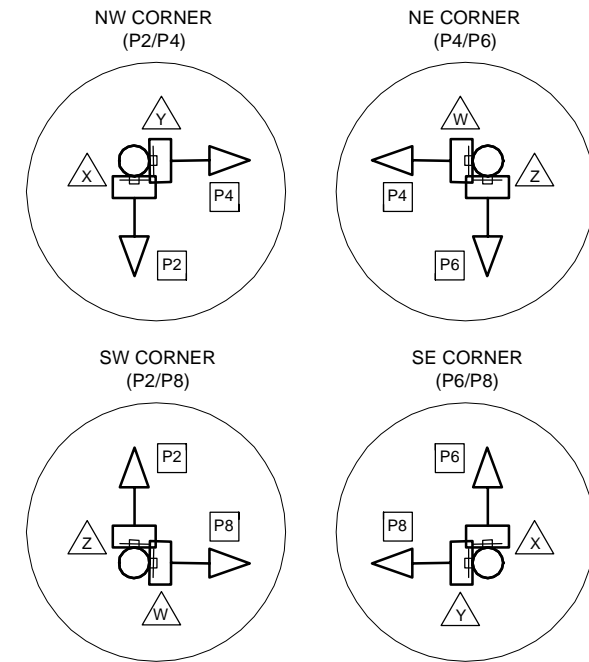
Drawing name: K:\OCA_Civil\142371063-SW 43 CT at SW 40 ST Signal Strain Pole\CAD\PlanSheets\4 SIGNAL PLAN.dwg T-07 SIGNALIZATION PLAN Feb 13, 2025 3:57pm by: gabe.gilligan
 This document, together with the concepts and designs presented herein, is intended only for the specific purpose and client for which it was prepared. Reuse of and improper reliance on this document without written authorization and adaptation by Kimley-Horn and Associates, Inc. shall be without liability to Kimley-Horn and Associates, Inc.

CONTROLLER TIMINGS								
TIMING FUNCTION	1	2	3	4	5	6	7	8
MOVEMENT NUMBER	1	2	3	4	5	6	7	8
MOVEMENT	NBL	SB	-	WB	SBL	NB	-	EB
INITIAL	5.0	15.0	-	10.0	5.0	15.0	-	10.0
EXTENSION	3.0	3.0	-	3.0	3.0	3.0	-	3.0
MAXIMUM GREEN 1	20.0	50.0	-	40.0	20.0	50.0	-	40.0
YELLOW CLEARANCE	3.7	4.4	-	3.7	4.4	3.7	-	4.8
ALL RED	2.5	2.0	-	2.5	2.0	2.0	-	2.0
PEDESTRIAN WALK	-	7.0	-	7.0	-	7.0	-	7.0
PED. FDW	-	21.0	-	23.0	-	23.0	-	27.0

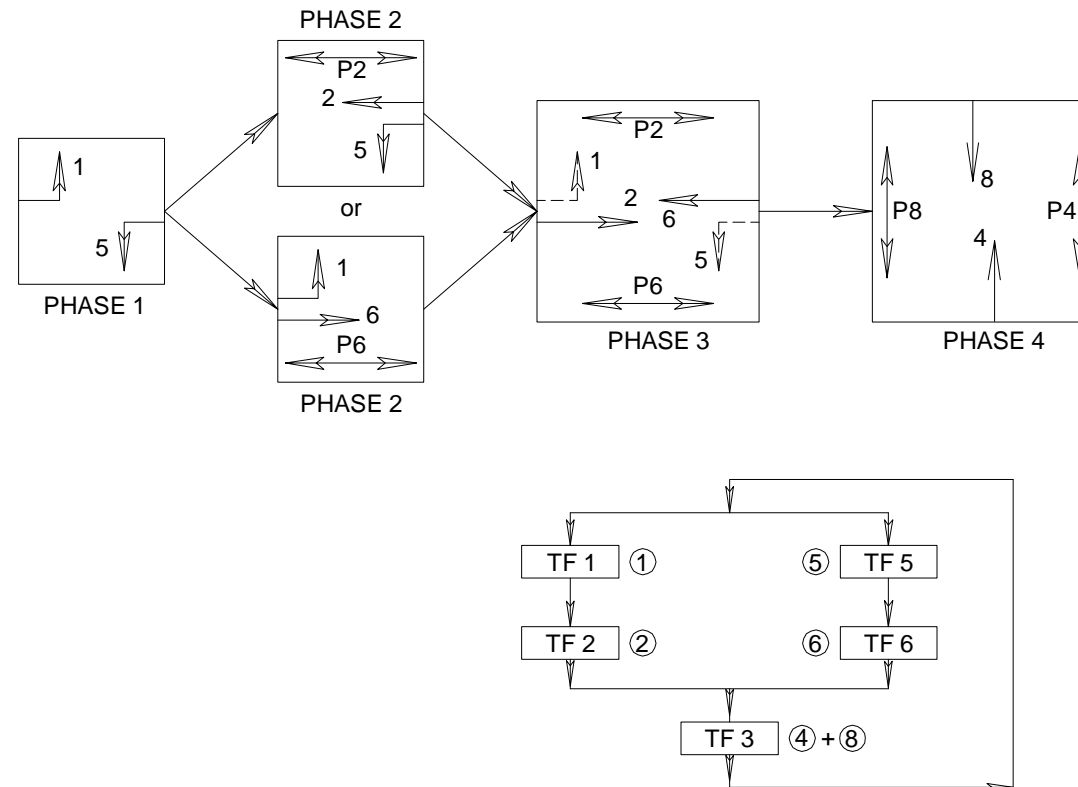
PED SIGN DETAILS
N.T.S.



PED POLE DETAILS
N.T.S.



SIGNAL OPERATING PLAN 7



REVISIONS	DESCRIPTION	DATE	DATE	NAME	DATE	DESCRIPTION
		BID PLANS			KHA	

CITY OF OCALA
OCALA, FLORIDA
OFFICE OF THE CITY ENGINEER
1805 NE 30TH AVE, BLDG 600
OCALA, FL 34470

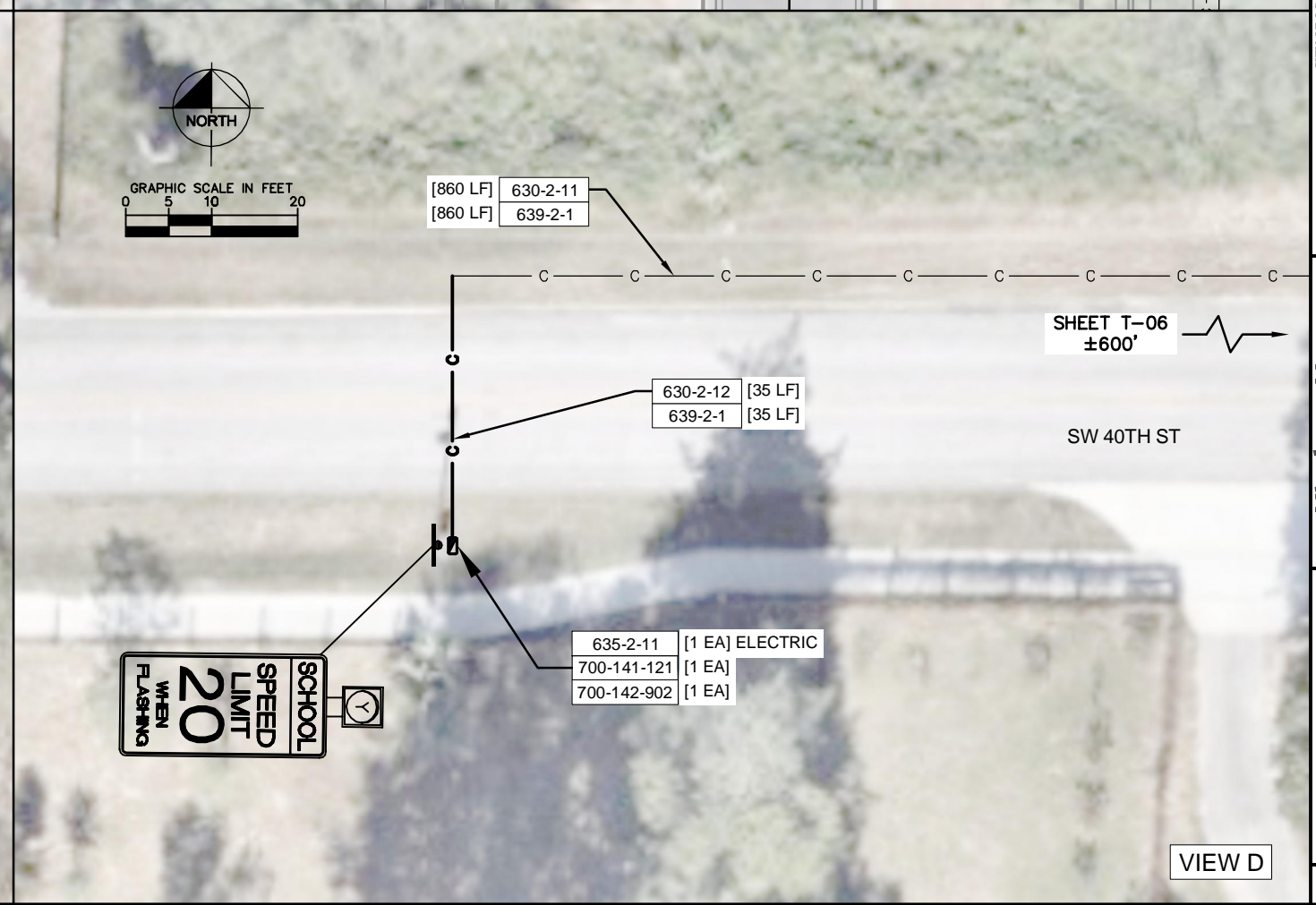
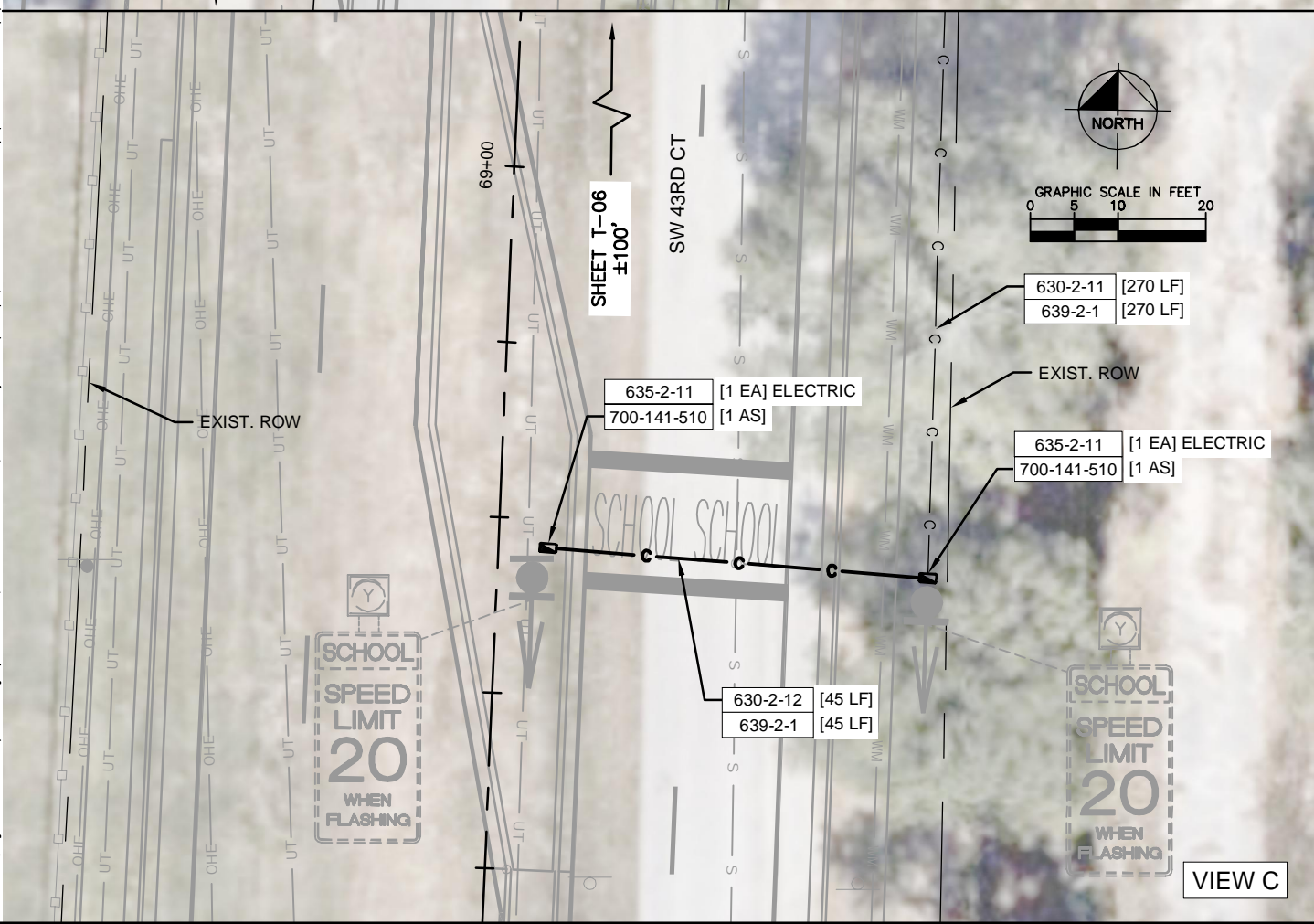
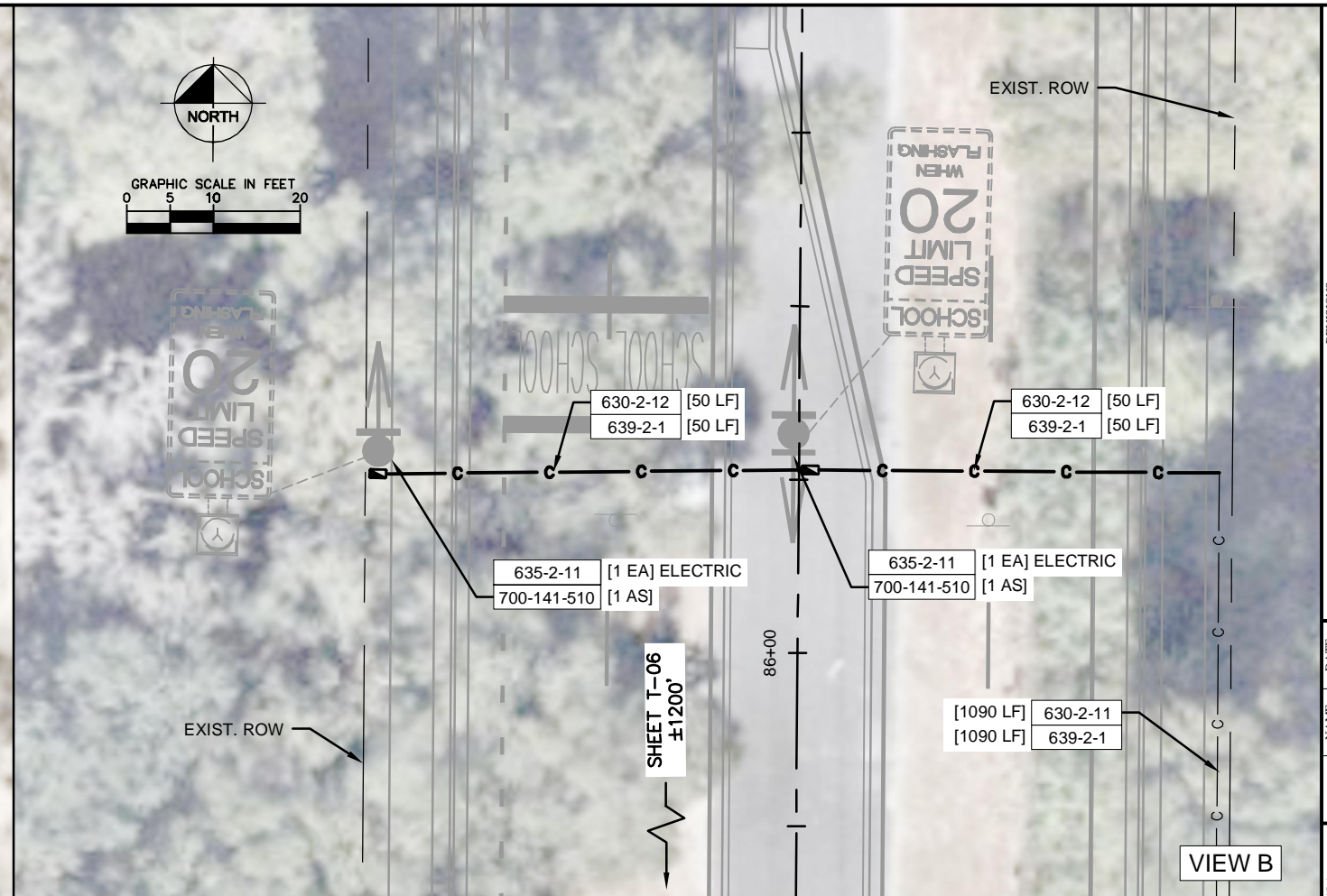
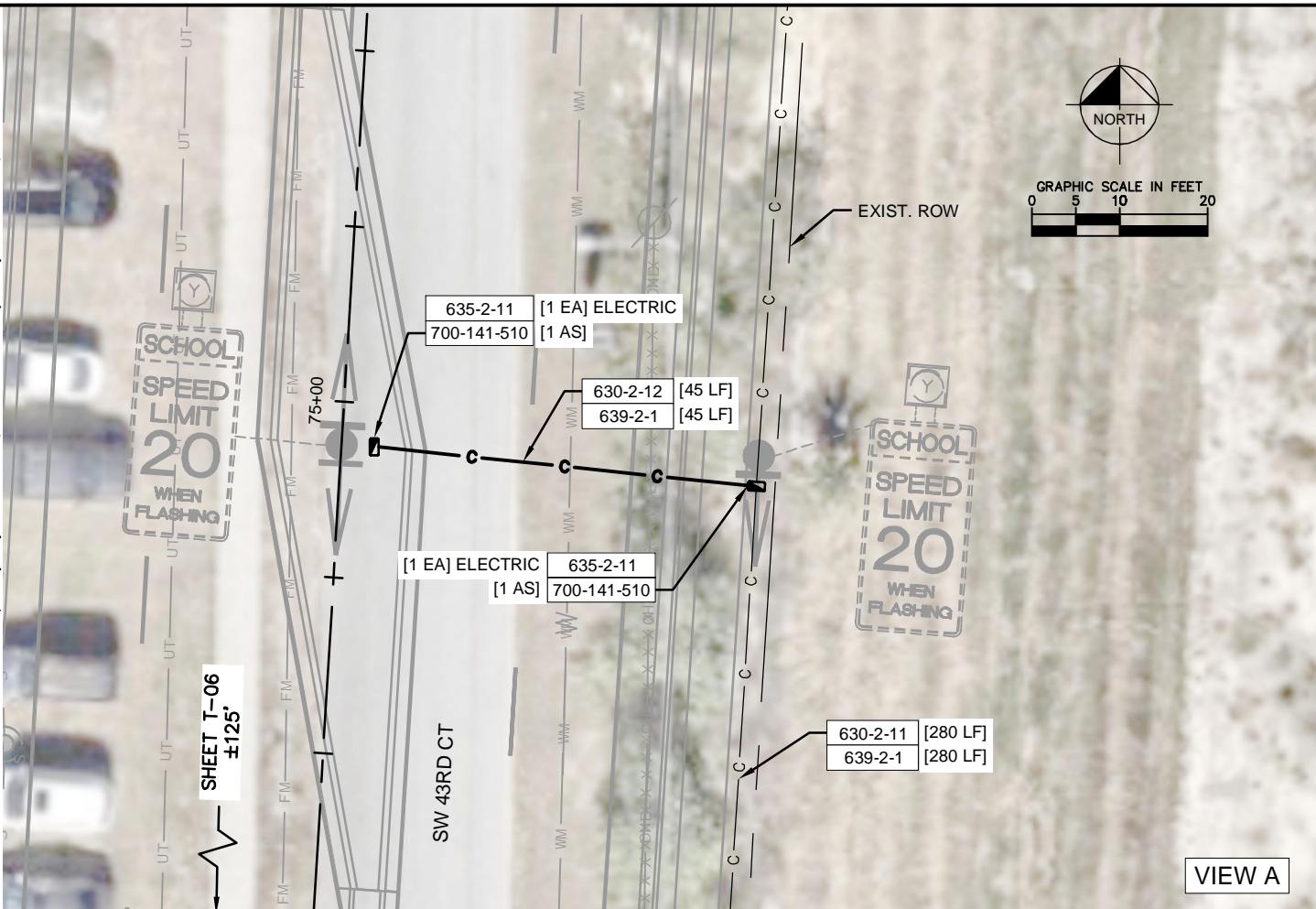
Kimley-Horn
© 2025 AMEC-FOSTER WHEELER, INC.
AMEC-FOSTER WHEELER OF FL.
P.E. LICENSE NO. 72294
1100 N. 17TH STREET, SUITE 200, OCALA, FL 34470
OCALA, FL 34470

SW 43RD CT AT SW 40TH ST
SIGNAL PLANS
SIGNALIZATION PLAN

SHEET
T-07

THE OFFICIAL RECORD OF THIS SHEET IS THE ELECTRONIC FILE DIGITALLY SIGNED AND SEALED UNDER RULE 61G15-23.004, F.A.C.

Drawing name: K:\OCA_Civil\142371063-SW 43 CT at SW 40 ST Signal Strain Pole\CAD\PlanSheets\4 SIGNAL PLAN.dwg T-08 SCHOOL FLASHER PLAN Feb 13, 2025 3:57pm by: gabe.gilligan
 This document, together with the concepts and designs presented herein, is intended only for the specific purpose and client for which it was prepared. Reuse of and improper reliance on this document without written authorization and adaptation by Kimley-Horn and Associates, Inc. shall be without liability to Kimley-Horn and Associates, Inc.

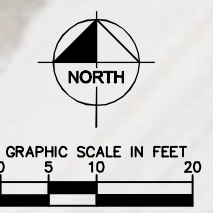
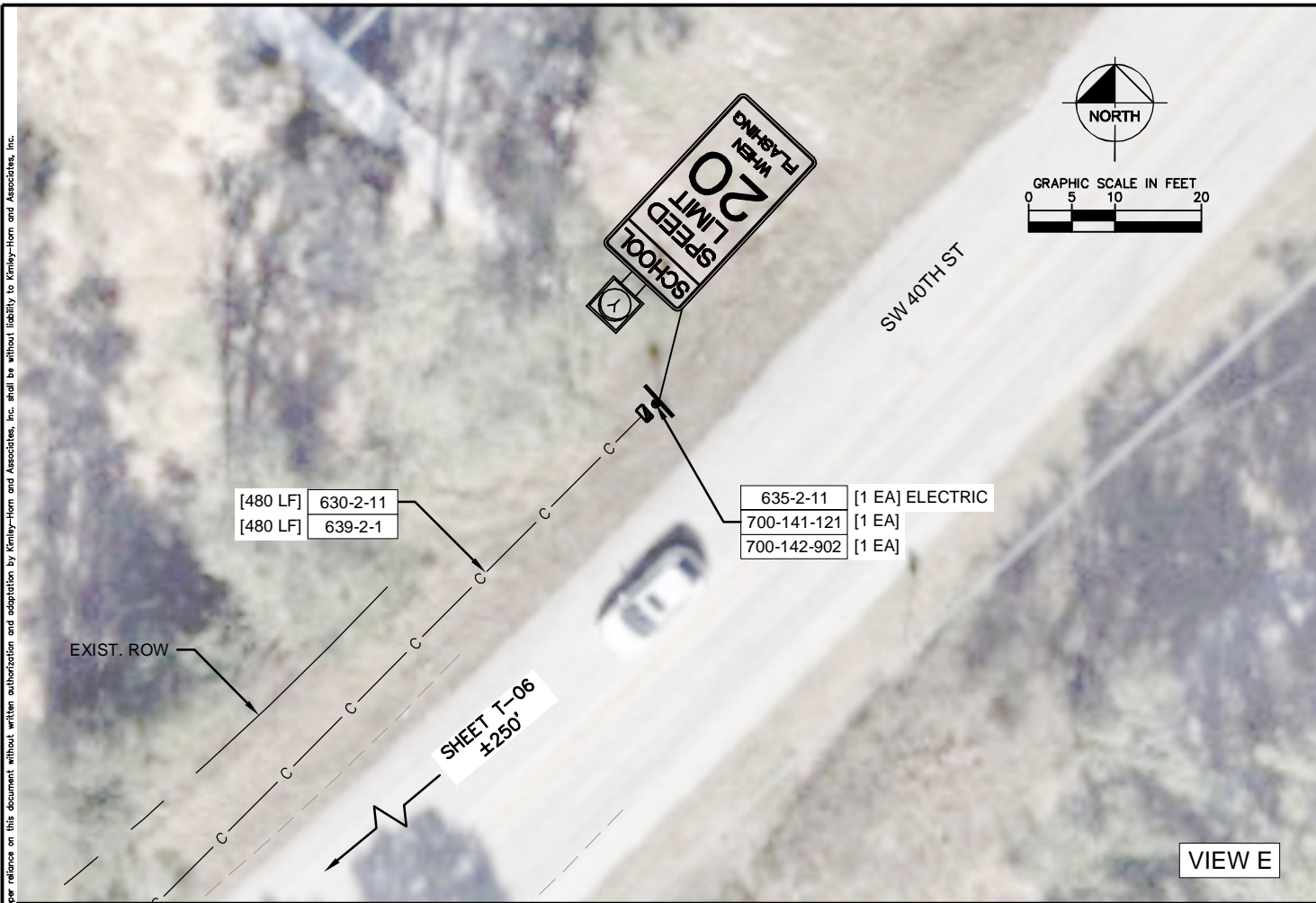


REVISIONS	DATE	DESCRIPTION	DATE	DESCRIPTION
				BID PLANS

CITY OF Ocala OCALA, FLORIDA	NAME	DATE
OFFICE OF THE CITY ENGINEER 1805 NE 30TH AVE, BLDG 600 OCALA, FL 34747	DRAWN BY KHA	DATE
	REVIEWED BY KHA	DATE
	SUPERVISED BY: A. L. GARTNER, P.E.	DATE

SW 43RD CT AT SW 40TH ST SIGNAL STRAIN POLE PLANS SCHOOL FLASHER PLAN	SHEET T-08
---	---------------

THE OFFICIAL RECORD OF THIS SHEET IS THE ELECTRONIC FILE DIGITALLY SIGNED AND SEALED UNDER RULE 61G15-23.004, F.A.C.



SHEET T-09	SW 43RD CT AT SW 40TH ST SIGNAL STRAIN POLE PLANS SCHOOL FLASHER PLAN	 © 2025 KIMLEY-HORN AND ASSOCIATES, INC. 1100 S. 17TH STREET, SUITE 200, OCALA, FL 34471 P.E. LICENSE NO. 72294 P.E. LICENSE NO. 72294	 Find your place CITY OF OCALA OCALA, FLORIDA OFFICE OF THE CITY ENGINEER 1805 NE 30TH AVE, BLDG 600 OCALA, FL 34470	NAME	DATE	REVISIONS	DESCRIPTION	DATE	DESCRIPTION
				DRAWN BY KHA					
				REVIEWED BY KHA					
				SUPERVISED BY: A. L. GARTNER, P.E.					

Drawing name: K:\OCA_Civil\142371063-SW 43 CT at SW 40 ST Signal Strain Pole\CAD\PlanSheets\5 STRAIN POLE ASSEMBLY.dwg T-10 SPAN TABULATION Feb 13, 2025 3:57pm by: gobe.gilligan
 This document, together with the concepts and designs presented herein, is intended only for the specific purpose and client for which it was prepared. Reuse of and improper reliance on this document without written authorization and adaptation by Kimley-Horn and Associates, Inc. shall be without liability to Kimley-Horn and Associates, Inc.

SPAN TABULATION (NOT FOR CONSTRUCTION)

POLE ID	SPAN	SPAN LENGTH (ft)	BACK-PLATES (Y/N)	SIGNAL DATA									SIGN DATA DISTANCE FROM POLE											
				DISTANCE FROM POLE (D#) / NUMBER OF SECTIONS (S)									(D#) / HEIGHT (H) / WIDTH (W)											
				POLE	D1 (ft)	S	D2 (ft)	S	D3 (ft)	S	D4 (ft)	S	D1 (ft)	H	W	D2 (ft)	H	W	D3 (ft)	H	W	D4 (ft)	H	W
1	A	113.5	Y	2	32.2	3	44.2	3	56.2	4	-	-	*	2'	8'-6"	60.2	3'	2'-6"	-	-	-	-	-	-
2																								
2	B	72.9	Y	3	25.9	3	33.9	3	-	-	-	-	*	2'	8'-6"	-	-	-	-	-	-	-	-	
3																								
3	C	117.1	Y	4	29.8	3	41.8	3	53.8	4	-	-	*	2'	8'-6"	58.8	3'	2'-6"	-	-	-	-	-	
4																								
4	D	73.9	Y	1	25.2	3	33.2	3	-	-	-	-	*	2'	8'-6"	-	-	-	-	-	-	-		
1																								

* INTERNALLY ILLUMINATED SIGN PLACED ON CANTILEVER BRACKET ARM ATTACHED TO POLE

CALL 2 BUSINESS DAYS BEFORE YOU DIG
 IT'S THE LAW! DIAL 811

 Know what's below. Call before you dig.
 SUNSHINE STATE ONE CALL OF FLORIDA, INC.

SW 43RD CT AT SW 40TH ST
 SIGNAL PLANS
 SPAN TABULATION
 SHEET T-10

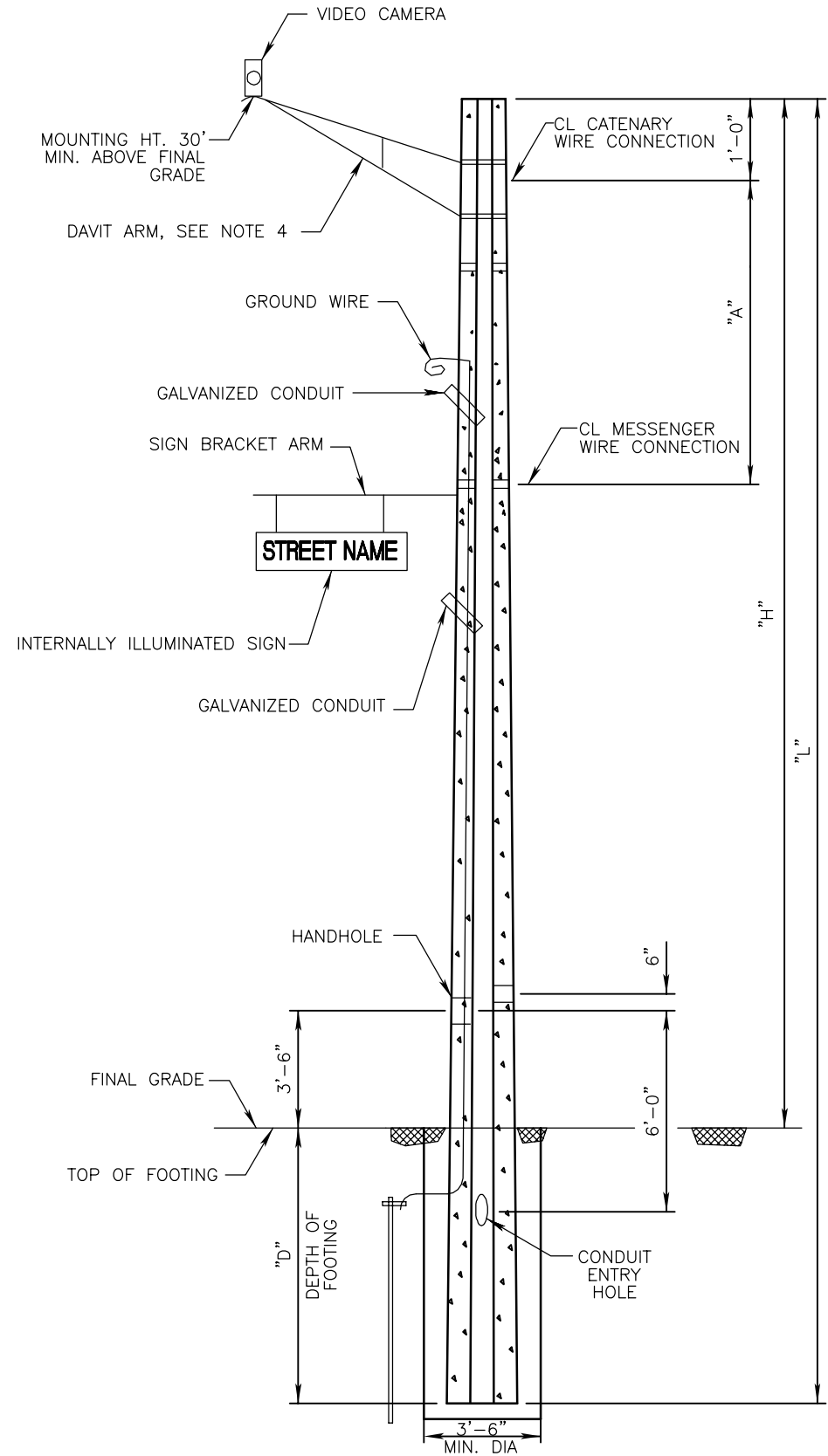
Kimley»Horn
 © 2025 KIMLEY-HORN AND ASSOCIATES, INC.
 1100 S. 17TH STREET, SUITE 200, OCALA, FL 34471
 P.E. LICENSE NO. 72294

OCALA
 CITY OF OCALA
 OFFICE OF THE CITY ENGINEER
 1805 NE 30TH AVE, BLDG 600
 OCALA, FL 34470
 Find your place

REVISIONS	DESCRIPTION	DATE	DATE	NAME	DATE
	BID PLANS			KHA	
				KHA	
				SUPERVISED BY: A. L. GARTNER, P.E.	

THE OFFICIAL RECORD OF THIS SHEET IS THE ELECTRONIC FILE DIGITALLY SIGNED AND SEALED UNDER RULE 61G15-23.004, F.A.C.

Drawing name: K:\OCA_Civil\142371063-SW 43 CT at SW 40 ST Signal Strain Pole Assemblies\5 STRAIN POLE ASSEMBLY.dwg T-11 STRAIN POLE ASSEMBLIES DATA TABLE Feb 13, 2025 3:57pm by: gabe.gilligan
 This document, together with the concepts and designs presented herein, is intended only for the specific purpose and client for which it was prepared. Reuse of and improper reliance on this document without written authorization and adaptation by Kimley-Horn and Associates, Inc. shall be without liability to Kimley-Horn and Associates, Inc.



DETAIL OF PRESTRESSED CONCRETE STRAIN POLES TYPE P-III TO P-VIII
(SEE INDEX 641-010 FOR POLE DETAILS)

GENERAL NOTES:

1. THIS DESIGN IS FOR SPAN WIRE ASSEMBLY WITH TWO-POINT ATTACHMENTS. INSTALLATION SHALL BE IN ACCORDANCE WITH THE FY 2024-25 EDITION OF THE FDOT STANDARD SPECIFICATIONS FOR ROAD AND BRIDGE CONSTRUCTION.

2. FOUNDATION PARAMETERS USED IN DESIGN:

STRAIN POLE 1
 BORING: PB-17
 FRICTION ANGLE: 31 DEG.
 UNIT WEIGHT: 42.6 PCF
 N-SPT #: 5.18
 SOIL THICKNESS: 15 FT.
 DESIGN WATER TABLE: 0' BELOW SURFACE (ASSUMED)

STRAIN POLE 2
 BORING: PB-18
 FRICTION ANGLE: 31 DEG.
 UNIT WEIGHT: 42.6 PCF
 N-SPT #: 7.35
 SOIL THICKNESS: 15 FT.
 DESIGN WATER TABLE: 0' BELOW SURFACE (ASSUMED)

STRAIN POLE 3
 BORING: PB-18
 FRICTION ANGLE: 31 DEG.
 UNIT WEIGHT: 42.6 PCF
 N-SPT #: 7.35
 SOIL THICKNESS: 15 FT.
 DESIGN WATER TABLE: 0' BELOW SURFACE (ASSUMED)

STRAIN POLE 4
 BORING: PB-17
 FRICTION ANGLE: 31 DEG.
 UNIT WEIGHT: 42.6 PCF
 N-SPT #: 5.98
 SOIL THICKNESS: 15 FT.
 DESIGN WATER TABLE: 0' BELOW SURFACE (ASSUMED)

3. ALL DIMENSIONS ARE IN FEET UNLESS OTHERWISE SPECIFIED.

4. CONTRACTOR TO COORDINATE WITH MAINTAINING AGENCY FOR DAVIT ARM SPECIFICATIONS.

5. PRESTRESSED CONCRETE STRAIN POLES SHALL BE CONSTRUCTED WITH A CONCRETE FOOTING AS PER SECTION 641-4.2 OF THE FDOT STANDARD SPECIFICATIONS FOR ROAD AND BRIDGE CONSTRUCTION, FY 2023-24.

6. WORK THIS SHEET WITH THE FDOT FY 2024-25 STANDARD PLANS FOR ROAD AND BRIDGE CONSTRUCTION, WITH APPLICABLE DESIGN STANDARD MODIFICATIONS. SEE INDEX 641-010 FOR CONCRETE POLES, INDEX 700-050 FOR FREE SWINGING, INTERNAL ILLUMINATED STREET SIGN AND 634-001 FOR SIGN CABLE AND SPAN WIRE INSTALLATION DETAILS.

7. DESIGN WIND SPEED = 140 MPH

8. FOUNDATION DESIGN IS BASED ON SUBSURFACE SOIL EXPLORATION AND GEOTECHNICAL BORINGS PROVIDED BY GEOTECH INC.

ESTIMATED VERTICAL CLEARANCES

POLE ID	SPAN	ESTIMATED VERTICAL CLEARANCE (ft)
1	A	17.97
2		
2	B	18.91
3		
3	C	17.96
4		
4	D	19.38
1		

CONCRETE STRAIN POLE SCHEDULE

POLE ID	SHEET NO.	POLE LOCATION		POLE TYPE	POLE LENGTH (L)	POLE HEIGHT (H)	DEPTH (D)	DIMENSION (A)	FINAL GRADE		CROWN ELEVATION (FT.)	CATENARY WIRE DIA. (IN.) / GRADE	MESSENGER WIRE DIA. (IN.) / GRADE
		STATION	OFFSET						POLE	ELEVATION			
1	T-08	72+01.28	53.61' LT	P-VIII	49'	34'	15'	6.75'	1	61.92	62.23	0.5" / UTILITY GRADE	0.5" / UTILITY GRADE
									2	60.41			
2	T-08	72+06.64	59.80' RT	P-VIII	50'	35'	15'	6.75'	2	60.41	61.86	0.5" / UTILITY GRADE	0.5" / UTILITY GRADE
									3	61.79			
3	T-08	71+32.70	57.94' RT	P-VIII	49'	34'	15'	6.75'	3	61.79	62.64	0.5" / UTILITY GRADE	0.5" / UTILITY GRADE
									4	62.20			
4	T-08	71+28.39	59.04' LT	P-VIII	49'	34'	15'	6.75'	4	62.20	61.39	0.5" / UTILITY GRADE	0.5" / UTILITY GRADE
									1	61.92			

	REVISIONS			
	DESCRIPTION	DATE	DATE	DESCRIPTION
	BID PLANS			

Kimley-Horn

INCORPORATED

1100 S. 17TH AVENUE, SUITE 200, Ocala, FL 34471

TEL: 352.237.1400 FAX: 352.237.1401

CITY OF OCALA
 OCALA, FLORIDA

OFFICE OF THE CITY ENGINEER
 1805 NE 30TH AVE, BLDG 600
 Ocala, FL 34470

SW 43RD CT AT SW 40TH ST
 SIGNAL PLANS
 STRAIN POLE ASSEMBLIES DATA
 TABLE

THE OFFICIAL RECORD OF THIS SHEET IS THE ELECTRONIC FILE DIGITALLY SIGNED AND SEALED UNDER RULE 61G15-23.004, F.A.C.

Drawing name: K:\OCA_Civil\142371063-SW 43 CT at SW 40 ST Signal Strain Pole\CAD\PlanSheets\7 GUIDESIGN WORKSHEET.dwg T-13 PROJECT SIGN DETAIL Feb 13, 2025 3:57pm by: gobe.gilligan
 This document, together with the concepts and designs presented herein, is intended only for the specific purpose and client for which it was prepared. Reuse of and improper reliance on this document without written authorization and adaptation by Kimley-Horn and Associates, Inc. shall be without liability to Kimley-Horn and Associates, Inc.

YOUR TAX DOLLARS AT WORK....

street name
 Contract No. CIP/250303

CITY OF OCALA, FLORIDA

CITY COUNCIL:

- Barry Mansfield**
DISTRICT 1
- Ire Bethea, Sr.**
(COUNCIL PRESIDENT PRO-TEM) DISTRICT 2
- Jay Musleh**
DISTRICT 3
- Kristen Dreyer**
(COUNCIL PRESIDENT) DISTRICT 4
- James Hilty, Sr.**
DISTRICT 5
- Ben Marciano**
MAYOR



CONTRACTOR
(name)

PROJECT COST
(bid amount)

START DATE
(mm - dd - yyyy)

COMPLETION DATE
(mm - dd - yyyy)

**FOR PROJECT INFORMATION CONTACT:
 CAPITAL IMPROVEMENT PROJECTS DIVISION
 352-629-8419**

SW 43RD CT AT SW 40TH ST SIGNAL PLANS PROJECT SIGN DETAIL	SHEET T-13	CITY OF OCALA OCALA, FLORIDA OFFICE OF THE CITY ENGINEER 1805 NE 30TH AVE, BLDG 600 OCALA, FL 34470 Find your place	DRAWN BY REVIEWED BY SUPERVISED BY: A. L. GARTNER, P.E.	NAME KHA KHA	DATE DATE DATE	REVISIONS DESCRIPTION DATE BID PLANS	DESCRIPTION DATE

THE OFFICIAL RECORD OF THIS SHEET IS THE ELECTRONIC FILE DIGITALLY SIGNED AND SEALED UNDER RULE 61G15-23.004, F.A.C.